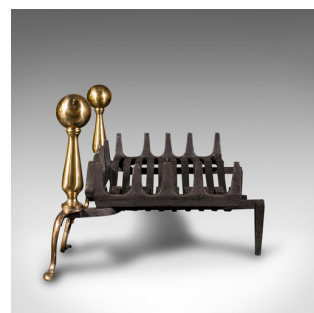
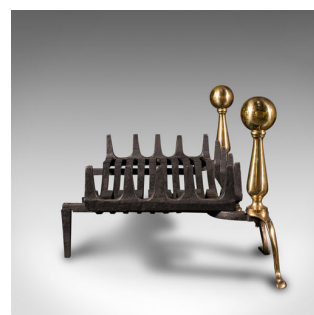


## Antique Fireplace Grate, English, Cast Iron, Fire Basket, Andirons, Edwardian



## DESCRIPTION

Our Stock # 18.8656

This is an antique fireplace grate. An English, cast iron fire basket with a pair of brass-topped andirons, dating to the Edwardian period, circa 1910.

- Introduce a touch of brightwork to the fireplace with this charming set
- Displays a desirable aged patina and in good order
- Quality cast iron basket presented in a good, consistent graphite finish
- Fire dogs present well with a polished brass ball over shaped front legs
- Generously sized basket of demi-lune form and of substantial weight
- Suitable for all fuel types, including logs and coal

This is an attractive antique fireplace grate, with delightfully polished brass accentuating the dark graphite tones of the basket. Ideal for the medium sized fireplace and graced with superb quality. Delivered ready for the home.

Search [London Fine for #18.8656](#) , or scan the QR code for more photos and details

## DIMENSIONS

Max Width: 87cm (34.25")  
Max Depth: 45.5cm (18")  
Max Height: 36.5cm (14.25")  
Basket Width: 61cm (24")  
Basket Depth: 35.5cm (14")  
Basket Height: 16.5cm (6.5")  
Fire Dog Width: 38cm (15")  
Fire Dog Depth: 45.5cm (18")  
Fire Dog Height: 36.5cm (14.25")

