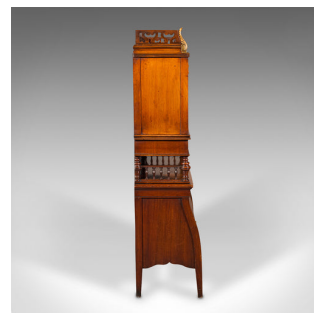


Antique Bureau Cabinet, English, Walnut, Writing Desk, Tambour, Edwardian, 1910



DESCRIPTION

Our Stock # 18.8675

This is an antique bureau cabinet. An English, walnut drop-front writing desk with tambour, dating to the Edwardian period, circa 1910.

- Graced with superb colour and of usefully compact stature
- Displays a desirable aged patina and in good order
- Select walnut stocks show fine grain interest and warm caramel hues
- Of distinctive form, the tambour lower tapers outwards from the upper cabinet
- Dressed to the top with a pierced fretwork upstand and accentuated with bronzed feathered scrolls
- Twin field panels adorn the fall of the upper cabinet, dressed with a stout lock escutcheon — key absent
- Lowering the fall, supported by the storage drawer reveals a tooled, deep crimson leather writing surface
- Behind the desk space, a compliment of glass ink wells and a wide pen rest
- Below, a single drawer dressed with a solid brass drop handle, and baize rests to carry the fall when lowered
- At the midpoint, a galleried shelf featuring stout risers and vase turned spindles
- Smooth action to the tambour lift the inside usefully divided into three

DIMENSIONS

Max Width: 71.5cm (28.25")
 Max Depth: 30cm (11.75")
 Max Height: 120cm (47.25")
 Slope Height: 72.5cm (28.5")
 Extended Depth: 51.5cm (20.25")
 Skiver Width: 51.5cm (20.25")
 Skiver Depth: 27cm (10.75")

LIST PRICE

£1,595.00



Search London Fine for #18.8675, or scan the QR code for more photos and details.
 +44 (0) 207 1855 511

London Fine Ltd
 The Antique Village
 The Old Whiteways Cider Factory
 Hele, Devon, EX5 4PW

sales@londonfine.co.uk
 E. & O. E.