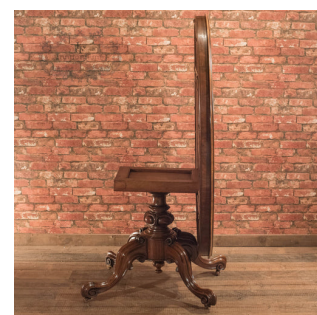


Victorian Breakfast Loo Table, c.1850-60

**DESCRIPTION**

Our Stock # LFA-1366 This is an antique, Victorian breakfast loo table dating to the time of the Great Exhibition, c.1850-60. The quarter butterfly veneered top is in excellent order and displays choice grain detail with good colour and patina. The tactile edge moulding delicately overhangs the burr apron trimmed with walnut bead. The tilt top is supported on a bulbous turned column splaying into four cabriole legs heavily carved with 'S' and 'C' scrolls and riding upon the original castors. A fine example with solid joints and construction, delivered waxed, polished and ready for the home.

Search [London Fine for #LFA-1366](#) or scan the QR code for more photos and details

DIMENSIONS

Max Width: 144cm (56.75")

Max Depth: 109cm (43")

Max Height: 74cm (29.25")

