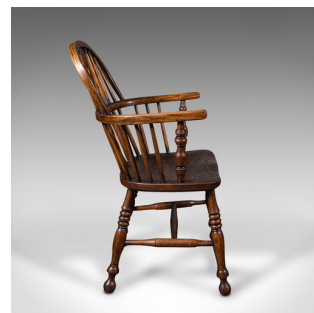
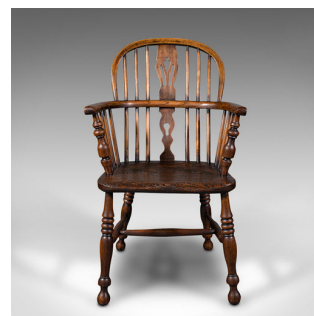


## Pair Of Antique Windsor Chairs, English, Elm, Ash, Elbow, Armchair, Victorian



## DESCRIPTION

Our Stock # 18.8724

This is a pair of antique Windsor chairs. An English, elm and ash elbow or armchair, dating to the mid Victorian period, circa 1850.

- Country house appeal, inviting to be placed at the fireside
- Displaying a desirable aged patina and in good order
- Elm and ash stocks show fine grain interest
- Appealing in colour with medium-to-deep caramel hues
- The tall, shaped top rail benefits from a gently chamfered rear edge
- A pierced, shaped back splat sits between slender spindles
- Cow horn arms supported at the leading edge by turned balusters
- Traditional, carved saddle seat with gently recessed squab
- Raised upon turned and splayed legs, with cupped knees
- United by a H-stretcher with turned spindles
- Standing upon four elongated bun feet at each corner

Search [London Fine for #18.8724](#) , or scan the QR code for more photos and details

## DIMENSIONS

Max Width: 54.5cm (21.5")  
Max Depth: 54.5cm (21.5")  
Max Height: 93cm (36.5")  
Seat Width: 39.5cm (15.5")  
Seat Depth: 35.5cm (14")  
Seat Height: 44.5cm (17.5")

