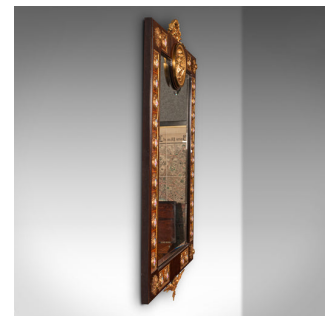


Large Vintage Overmantle Mirror, Continental, Walnut, Decorative, Italianate



DESCRIPTION

Our Stock # 18.8609

This is a large vintage overmantle mirror. A Continental, walnut decorative mirror in Italianate taste, dating to the late 20th century, circa 1970.

- Strikingly ornate, with superb craftsmanship and highly distinctive
- Displaying a desirable aged patina and in very good order
- Walnut frame shows deep chestnut hues and fine grain interest
- Large and delightfully heavy, with obvious quality
- Generous proportions to the mirror plate with minimal foxing and bright appearance
 - Prominent gilt metal details, with a striking laurel wreath pediment over a relief medallion of playful cherubs
- Set within the upper edge, the bevelled glass skilfully follows the curvature of the inset medallion
 - 28 enamel cameos with colourful foliate bouquets mounted upon kingwood inlays in gilt frames
 - Each corner accentuated with gilt metal flowerheads, the lower rail hosting a decorative mount
 - Dressed to the rear with a heavy, metal hanging chain, for ease of wall mounting

DIMENSIONS

Max Width: 55.5cm (21.75")
 Max Depth: 3.5cm (1.5")
 Max Height: 95cm (37.5")
 Mirror Plate Width: 38.5cm (15.25")
 Mirror Plate Height: 63.5cm (25")

LIST PRICE

£2,550.00



Search [London Fine](#) for #18.8609, or scan the QR code for more photos and details

+44 (0) 207 1833 511

London Fine Ltd
 The Antique Village
 The Old Whiteways Cider Factory
 Hele, Devon, EX5 4PW

sales@londonfine.co.uk
 E. & O. E.