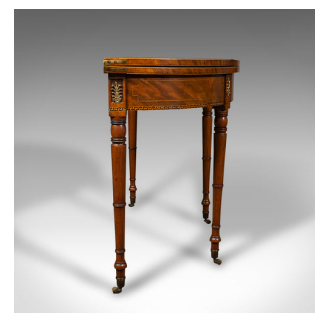


Antique Demi Lune Table, English, Walnut, Fold Over, Card, Game, Georgian, 1800



**DESCRIPTION**

Our Stock # 18.8694

This is an antique demi-lune table. An English, walnut and satinwood fold over card table, dating to the Georgian period, circa 1800.

- Beautiful Georgian craftsmanship for the finest gentleman's lounge
- Displaying a desirable aged patina and in good order
- Superb walnut stocks offers fine grain interest
- Warm caramel hues beam beneath a wax polish finish
  - Demi-lune in form, the attractive top graced with quality satinwood and burr mahogany inlay
  - Opening outwards, the hinged top rests upon a pair of flying rear legs
  - Rear legs dressed with protective felt cushions to safely support the table top
  - Of great quality, the new emerald green baize is a delightful shade
    - Deep drum apron accentuated with boxwood inlays, between prominent block shoulders
    - Each shoulder decorated with an inset ormolu leaf mount
    - Striking boxwood and ebony Greek key banding to the lower edge

**DIMENSIONS**

- Max Width: 92cm (36.25")
- Max Depth: 47cm (18.5")
- Max Height: 73.5cm (29")
- Extended Width: 91.5cm (36")
- Extended Depth: 91.5cm (36")
- Extended Height: 71cm (28")

Search [London Fine](#) for #18.8694 , or scan the QR code for more photos and details

