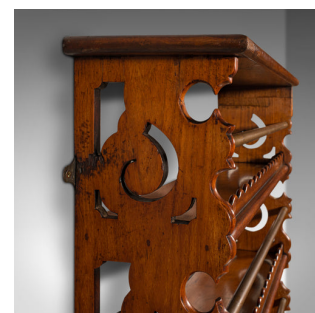
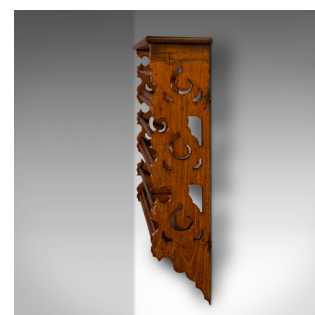


## Antique Ship's Shelves, English, Maritime, Kitchen Rack, Safety Bars, Edwardian



### DESCRIPTION

Our Stock # 18.8717

This is a set of antique ship's gallery shelves. An English, mahogany and brass maritime or kitchen rack with safety bars, dating to the Edwardian period, circa 1910.

- Attractive shelf unit with carved and pierced detail
- Displaying a desirable aged patina, later repair to one side
- Select stocks show fine grain interest and warm caramel hues
- Removable brass safety rails rest inside the pierced frame
- Dressed with a quartet of brass hanging loops for ease of mounting

This is a fascinating antique ship's gallery shelf, as useful in a nautical setting as it would be in a country kitchen. Solid joints and construction, delivered waxed, polished and ready to hang.

Search [London Fine for #18.8717](#) , or scan the QR code for more photos and details

### DIMENSIONS

- Max Width: 81cm (32")
- Max Depth: 19.5cm (7.75")
- Max Height: 85cm (33.5")
- Shelf Width: 72cm (28.25")
- Shelf Depth: 15.5cm (6")
- Upper Shelf Height: 18cm (7")
- Middle Shelf Height: 19cm (7.5")
- Lower Shelf Height: 20cm (7.75")

