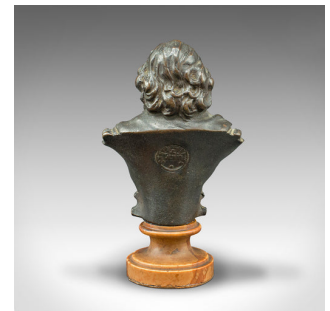
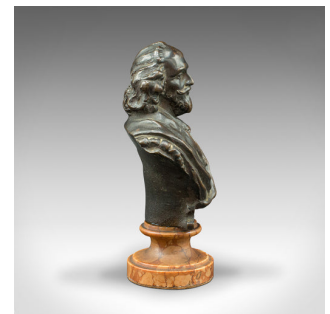


Small Antique Portrait Bust, Austrian, Bronze Figure, Shakespeare, Victorian



DESCRIPTION

Our Stock # 18.8758

This is a small antique portrait bust. An Austrian, bronze figure of William Shakespeare set upon marble, dating to the late Victorian period, circa 1900.

- Charmingly petite, with beautifully weathered finish and great detail
- Displays a desirable aged patina and in good original order
- Patinated bronze with gentle wear and dark tonality
- Nameplate to front bears the Bard's name 'Shakespeare'
- Stands upon a circular rouge marble socle, dressed with protective leather pad
- Foundry mark to rear for Droits Reserves J. Kalmar of Vienna

This is a fascinating antique portrait bust, capturing the distinctive likeness of the celebrated playwright William Shakespeare. A treat for fans of the great man or collector alike. Delivered polished and ready to display.

Search [London Fine for #18.8758](#), or scan the QR code for more photos and details

DIMENSIONS

Max Width: 6.5cm (2.5")
 Max Depth: 4.5cm (1.75")
 Max Height: 11.5cm (4.5")

