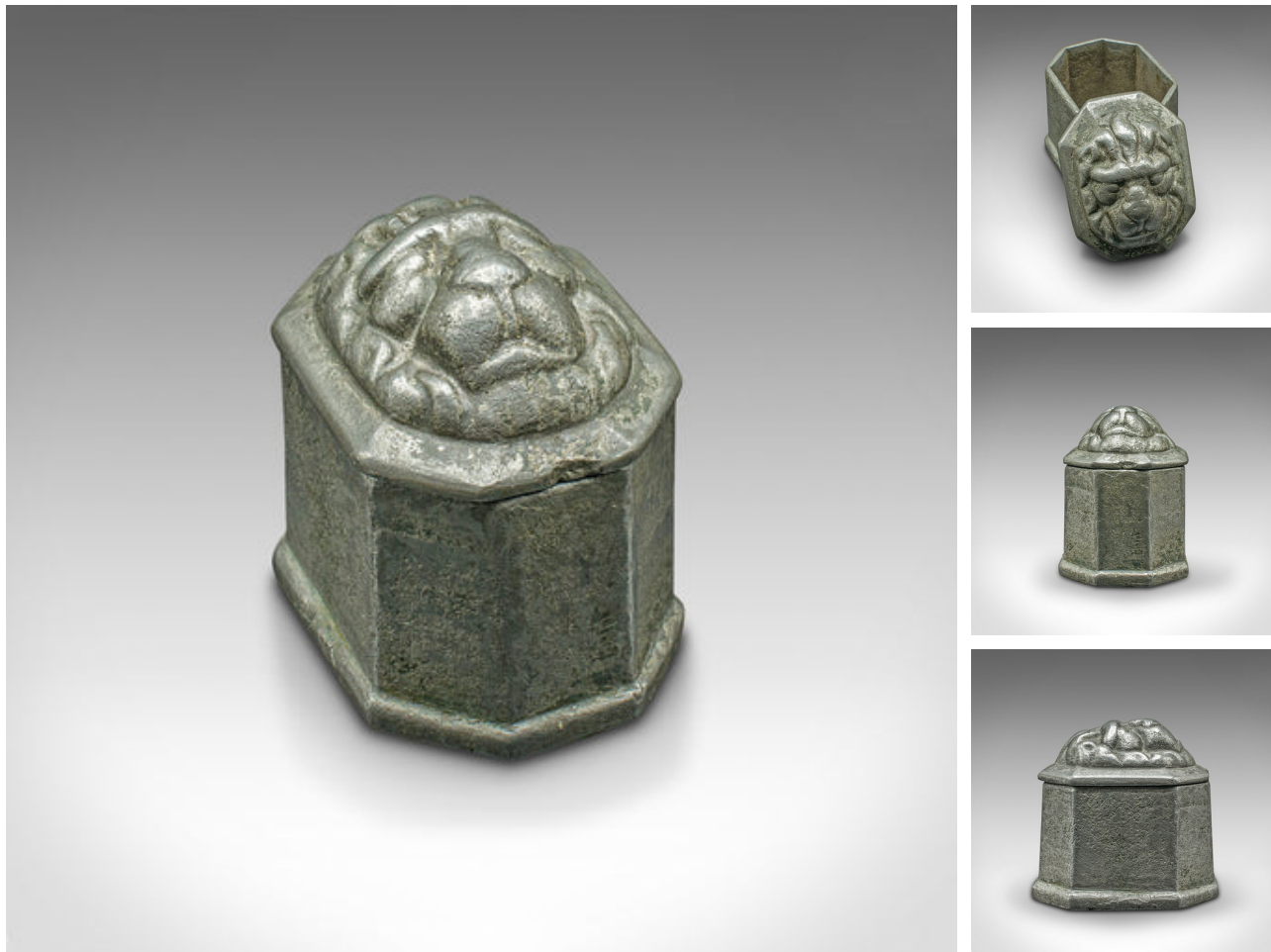


Antique Tobacco Keeper, English, Lead, Decorative Snuff Box, Georgian, C.1750

**DESCRIPTION**

Our Stock # 18.8768

This is an antique tobacco keeper. An English, lead decorative snuff box, dating to the mid Georgian period, circa 1750.

- Prominent lion masque accentuates this pleasingly substantial keeper
- Displays a desirable aged patina and in good original order
- Stout lead feels great in the hand and offers bright tonality
- Lightly patinated throughout, with clean interior
- Excellent lion head decorating the lid, in keeping with English heraldic tradition

This is a superb antique tobacco keeper, with quality lead frame and a striking lion motif to the lid. Delivered ready to enjoy.

Search [London Fine for #18.8768](#), or scan the QR code for more photos and details

DIMENSIONS

Max Width: 7cm (2.75")
Max Depth: 9.5cm (3.75")
Max Height: 9cm (3.5")

