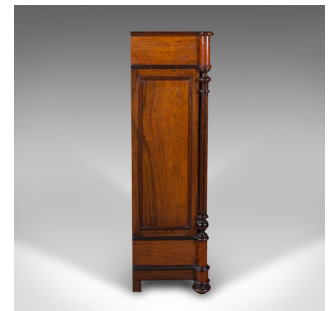


## Antique Escritoire Cabinet, French Secrétaire, Chest of Drawers, Victorian, 1900



### DESCRIPTION

Our Stock # 18.8787

This is an antique escritoire cabinet. A French, burr walnut secretaire chest of drawers with writing desk, dating to the late Victorian period, circa 1900.

- Attractive presentation, with quality figuring and generous writing slope
- Displays a desirable aged patina and in good order
- Burr walnut stocks a treat for lovers of fine grain interest
- Deep caramel hues beam beneath a wax polish finish, with warm amber tones
- Narrow of profile, arranged as a tallboy chest of drawers
- Four such drawers opening, above and below the fall-front writing surface
- Each fascia dressed with striking ormolu lionhead lock escutcheons
- Two keys present, the upper most drawer and the fall in working order
- Lowering the fall offers the angled writing slope, at a comfortable height of 76cm at the lower edge
  - Delightful pair of satinwood drawers beneath a useful shelf, each dressed with small, circular foliate handles
  - Fascinating pilasters frame the whole, with turned collars and fluted detail

### DIMENSIONS

Max Width: 81.5cm (32")  
 Max Depth: 42.5cm (16.75")  
 Max Height: 141.5cm (55.75")  
 Writing Slope Width: 63cm (24.75")  
 Writing Slope Depth: 39.5cm (15.5")  
 Writing Slope Height: 76cm (30")



Search [London Fine for #18.8787](#), or scan the QR code for more photos and details