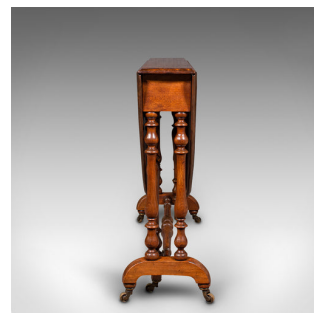


Antique Oval Sutherland Table, English, Gate Leg, Occasional, Victorian, C.1850



DESCRIPTION

Our Stock # 18.8782

This is an antique oval Sutherland table. An English, satin mahogany gate-leg occasional table, dating to the early Victorian period, circa 1850.

- Graced with exquisite figuring and deep colour
- Displays a desirable aged patina and in very good order
- Striking satin mahogany stocks present superb grain interest beneath a wax polish finish

finish

- Bronzed caramel hues react beautifully to the light
- Of useful breakfast table or tea service proportion when extended
- Substantial drop flaps extend the seating area into an oval for four
- In the folded position, the narrow profile ideal for storing in the smaller room
- Fascinating wheeled gate legs add support for each leaf
- Elegantly turned baluster legs united with a stretcher rail between arched trestle feet

- The whole riding smoothly upon a set of six brass castors

Search [London Fine for #18.8782](#) , or scan the QR code for more photos and details

DIMENSIONS

Folded Width: 89.5cm (35.25")
 Folded Depth: 26cm (10.25")
 Folded Height: 70cm (27.5")
 Extended Width: 106cm (41.75")
 Extended Depth: 89.5cm (35.25")
 Extended Height: 70cm (27.5")

LIST PRICE

£2,350.00

