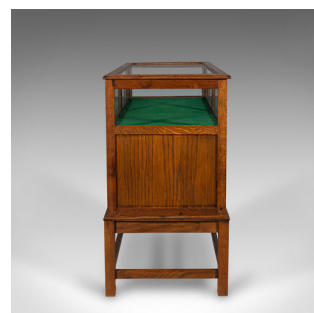


Antique Jeweller's Display Cabinet, English, Oak, Shop, Haberdashery, Edwardian



DESCRIPTION

Our Stock # 18.8837

This is an antique jeweller's display cabinet. An English, oak shop or haberdasher's showcase, dating to the Edwardian period, circa 1910.

- Delightfully lit display area with a useful suite of drawers below
- Displaying a desirable aged patina - some light scratches to glass top commensurate with use
- Select oak stocks show fine grain interest and an abundance of medullary rays
- Warm caramel colours beam beneath a wax polish finish
- Full-width glazed lid held open securely with articulated stays
- Six quality windows surround the generous upper showcase
- Drawing in the light, the showcase lined with a quality emerald green baize
- Inset brass-lined lock for the display area – untested, key absent
- Arrangement of six useful drawers, each dressed with flush brass handles
- Raised upon a quartet of square section legs, united with stretcher rails
- Beautifully presented cabinetry, ideal for central room placement

Search [London Fine for #18.8837](#) , or scan the QR code for more photos and details

DIMENSIONS

Max Width: 124cm (48.75")
 Max Depth: 54cm (21.25")
 Max Height: 95.5cm (37.5")
 Display Area Width: 117.5cm (46.25")
 Display Area Depth: 46cm (18")
 Display Area Height: 19.5cm (7.75")

