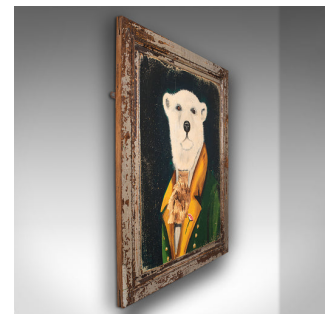


Vintage Polar Bear Portrait, English, Oil, Victorian Pine, Anthropomorphic Art



DESCRIPTION

Our Stock # 18.8846

This is a vintage polar bear portrait. An English, oil painting on reclaimed Victorian pine, dating to the late 20th century, circa 1970.

- Unusual and charming, ideal for collectors of anthropomorphism
- Displays a desirable aged patina throughout
- Handpainted skilfully onto a reclaimed Victorian pine panel
- Of generous size, ideal for display in the home or a retail space
- Eye-catching portrait of a polar bear dressed in a smart jacket
- Wonderful colour palette, with rich green and yellow hues on a black ground
- Artist's initials to the lower corner - appears to read 'BSM'
- Dressed with small brass mounting loops for ease of hanging

This is a delightful vintage polar bear portrait, presenting appealing character and colour. Delivered ready to mount.

Search [London Fine for #18.8846](#) , or scan the QR code for more photos and details

DIMENSIONS

Max Width: 73cm (28.75")
 Max Depth: 2.5cm (1")
 Max Height: 86.5cm (34")
 Portrait Width: 56cm (22")
 Portrait Height: 70cm (27.5")

