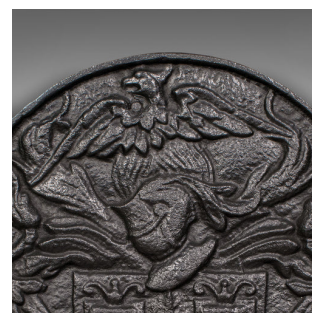
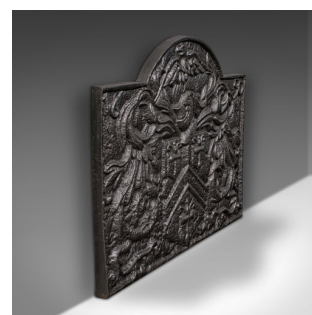


Large Antique Fire Back, English, Fireplace, Background, Reflector, Victorian



DESCRIPTION

Our Stock # 18.8856

This is a large antique fire back. An English, heavy cast iron fireplace background or reflector, dating to the late Victorian period, circa 1900.

- Wide of proportion and a pleasingly decorative reflector
- Displays a desirable aged patina and in good order
- Cast iron presenting consistent tones to the graphite finish
- A substantial, lasting piece with a wonderfully heavy presence
- Cast detail of traditional English heraldic taste
- Phoenix set within the dome top above a knight's helmet
- Replete with a coat of arms to the centre
- Set against a foliate ground and annotated with 1650 across the fascia

This is a large antique fire back, with incredible weight. Set to enhance the fireside appeal of any room, this piece is delivered polished and ready for display.

Search [London Fine for #18.8856](#), or scan the QR code for more photos and details

DIMENSIONS

Max Width: 69cm (27.25")

Max Depth: 3cm (1.25")

Max Height: 53cm (20.75")

