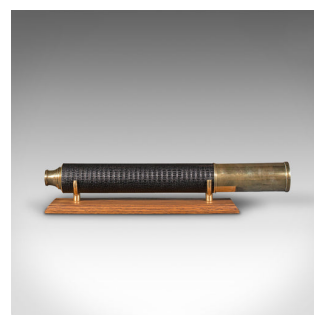


Large Antique Telescope, English, Terrestrial, Astronomical, Victorian, C.1860



DESCRIPTION

Our Stock # 18.7931

This is a large antique telescope. An English, brass single draw terrestrial or astronomical refractor dating to the mid Victorian period, circa 1860.

Perfect for bird watching, landscape appreciation, wildlife, or maritime observation. Equally suitable for observing the night sky.

- Fascinating example of superb proportion and clarity
- Displaying a desirable aged patina with some light wear commensurate with age
 - Brass barrels offering bright, reflective tones - some light tarnish present from polishing
- Of single draw type, with broad primary barrel and long draw tube
- Clear, bright objective with 40mm diameter front element replete with a long sliding sun shade
 - Primary barrel dressed in a delightful later faux crocodile finish with deep black finish
 - Swivel dust cover protects the eye cup at the rear
 - Supplied with a London Fine oak and brass 'Captain's Stand' for display

DIMENSIONS

Closed Length: 59.5cm (23.5")

Fully Drawn Length: 105cm (41.25")

Objective Lens Diameter: 40mm (1.5")



This is a quality antique telescope with a bright objective and wonderfully tactile barrel dressing. Delivered ready to be displayed or enjoyed.

+44 (0) 207 1833 511

Search [London Fine](#) for #18.7931, or scan the QR code for more photos and details

London Fine Ltd
The Antique Village
The Old Whiteways Cider Factory
Hele, Devon, EX5 4PW

sales@londonfine.co.uk

E. & O. E.