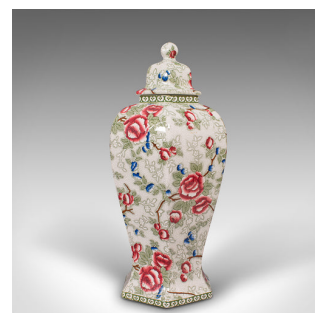


Large Pair Of Antique Baluster Urns, English Ceramic, Decorative Jar, Vase, 1920



DESCRIPTION

Our Stock # 18.8884

This is a large pair of antique baluster urns. An English, ceramic decorative lidded jar or vase, dating to the early 20th century, circa 1920.

- Striking hexagonal forms and profusely detailed in Chinese Rose taste
- Displaying a desirable aged patina and in good original order
- Quality ceramic with pleasing weight, distinctively decorated with colourful foliate pattern
- Delightful palette of crimson, green and bright blue beam against a white ground
- Domed lids with small finials sit above a shallow neck with pattern borders
- Traditional baluster urn shape with six faceted sides, tapering to the foot
- Maker's stamp to base for Albion Pottery of Burslem, Stoke on Trent
- Stamped with model number 'Shape No.1' and serial number 1652, 10

This is a superb pair of antique baluster urns, beautifully presented with fine colour and wonderful, large proportions. Crafted in the famous Potteries area of England and decorated with Chinese pattern taste. Delivered polished and ready to display.

Search [London Fine for #18.8884](#) , or scan the QR code for more photos and details

DIMENSIONS

- Max Width: 20.5cm (8")
- Max Depth: 18.5cm (7.25")
- Max Height: 42.5cm (16.75")

