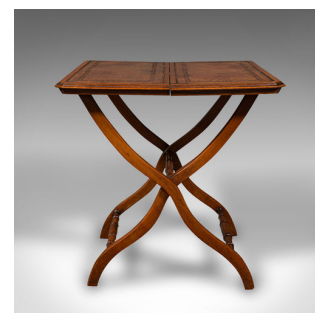
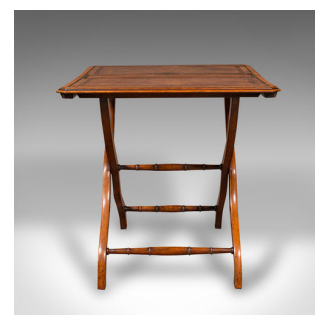


Antique Folding Writing Table, English, Walnut, Side, Serving, Victorian, C.1880



DESCRIPTION

Our Stock # 18.8930

This is an antique folding writing table. An English, walnut carriage, side or serving table, dating to the Victorian period, circa 1880.

- Graceful and interesting, with wonderful versatility for any room
- Displays a desirable aged patina and in good original order
- Select walnut stocks show fine grain interest and warm caramel hues
- Of folding form, with twist latch below, folding across the centreline upon brass hinges
- Gently tiered top with an inset writing skiver, double tooled and embossed in tan leather
- Distinctive serpentine legs in striking X-form, united by turned baluster rails

This is a fascinating and attractive antique folding writing table, with wonderful colour and ideal throughout the house. Solid joints and construction, delivered waxed, polished and ready for the home.

Search [London Fine for #18.8930](#), or scan the QR code for more photos and details

DIMENSIONS

Max Width: 61cm (24")

Max Depth: 61cm (24")

Max Height: 62.5cm (24.5")

