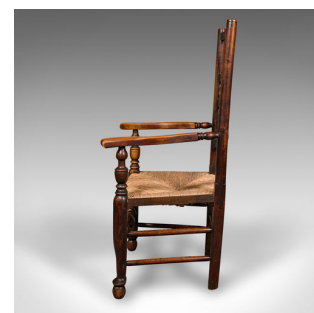
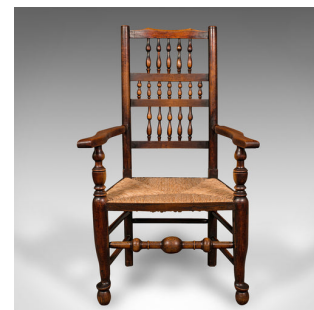


Antique Lancashire Spindle Back Carver, English, Hall, Elbow Chair, Victorian

**DESCRIPTION**

Our Stock # 18.8892

This is an antique Lancashire spindle back carver chair. An English oak and mahogany hallway elbow seat, dating to the early Victorian period, circa 1850.

- Wonderfully traditional Lancashire taste with fine rush seat
- Displays a desirable aged patina throughout
- Select stocks present fine grain interest and deep caramel hues
- Comfortable, country house rush seat in superb order with taut weave
- Three banks of spindles tastefully crowned with a shaped crest rail
- Graceful arms with superb figuring, supported by turned balusters
- Stout, bulbous front legs on elongated bun feet, with square section rear legs
- Strong double box stretcher with feature turned front stretcher

This is an appealing antique Lancashire spindle back carver chair, with quality rush seat and turned craftsmanship. Solid joints and construction, delivered waxed, polished and ready for the home.

Search [London Fine for #18.8892](#), or scan the QR code for more photos and details

DIMENSIONS

Max Width: 66.5cm (26.25")
Max Depth: 54cm (21.25")
Max Height: 110.5cm (43.5")
Seat Width: 48cm (19")
Seat Depth: 44cm (17.25")
Seat Height: 42cm (16.5")

