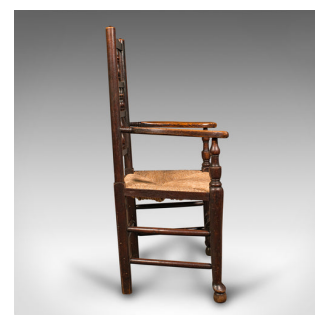
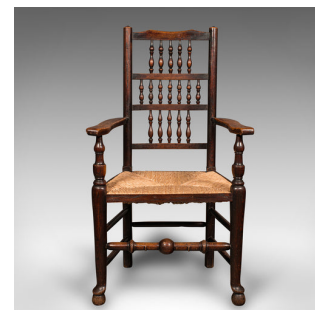


## Antique Lancashire Spindle Back Elbow Chair, English Oak, Hall Carver, Victorian



### DESCRIPTION

Our Stock # 18.8943

This is an antique Lancashire spindle back elbow chair. An English, oak hallway carver seat, dating to the early Victorian period, circa 1850.

- Of traditional Lancashire taste with fine craftsmanship
- Displays a desirable aged patina and in good order
- Select oak presents fine grain interest and deep caramel hues
- Comfortable rush seat with quality, taut weave
- Presents three banks of spindles beneath a shaped crest rail
- Serpentine arms with striking figuring, on turned baluster supports
- Stout, tapering front legs with bun feet, square section legs to rear
- United by double box stretcher rails with turned front stretcher

This is an attractive antique Lancashire spindle back elbow chair, with a quality rush seat and delightful craftsmanship. Solid joints and construction, delivered waxed, polished and ready for the home.

Search [London Fine for #18.8943](#), or scan the QR code for more photos and details

### DIMENSIONS

Max Width: 63cm (24.75")  
Max Depth: 48.5cm (19")  
Max Height: 113cm (44.5")  
Seat Width: 48cm (19")  
Seat Depth: 43.5cm (17.25")  
Seat Height: 45cm (17.75")

