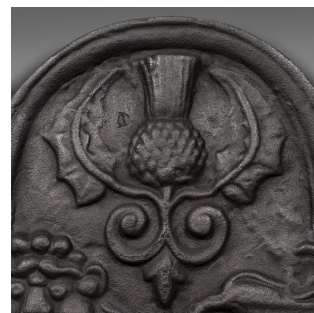
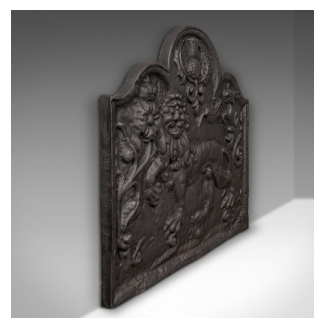


## Antique Relief Fire Back, English, Iron, Fireplace, Carolean Revival, Victorian



### DESCRIPTION

Our Stock # 18.8890

This is an antique relief fire back. An English, cast iron decorative fireplace reflector with Carolean taste, dating to the late Victorian period, circa 1900.

- Charmingly ornate cast fire back with superb lion motif
- Displays a desirable aged patina and in good order
- Pleasingly heavy cast iron with a thickness of 3cm (1.25")
- Graphite finish in good, consistent order throughout
- Copious heraldic decoration to the decorative relief
- Proud lion masque set within a foliate scene, full of character
- Thistle with scrolled detail to the centre, with crowned fleur-de-lys to the side
- Annotated 1641, placing the revival taste within the Carolean period (Charles I; 1625 - 1649)

This is a charming antique relief fire back, with great detail and 17th century revival taste. Delivered polished and ready for the fireplace.

Search [London Fine for #18.8890](#), or scan the QR code for more photos and details

### DIMENSIONS

Max Width: 76cm (30")

Max Depth: 3cm (1.25")

Max Height: 67.5cm (26.5")

