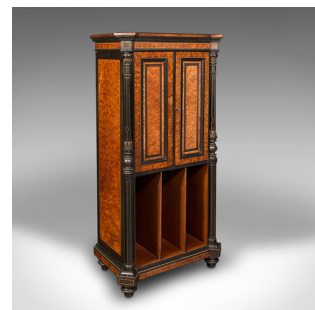


Antique Gentleman's Folio Cabinet, English, Birds Eye Maple, Decorative, Regency



DESCRIPTION

Our Stock # 18.8971

This is an antique gentleman's folio cabinet. An English, bird's eye maple and walnut decorative cupboard, dating to the Regency period, circa 1820.

- Exceptional craftsmanship and of superior material quality
- Displays a desirable aged patina and in good order
- Striking bird's eye maple presents wondrous grain interest
- Warm caramel hues beam against ebonised walnut stocks
- Distinctive canted corners forming a fascinating impression
- Pair of upper doors, with field panels over a trio of lower compartments
- Dressed with an inset brass-lined lock, in working order – key present
- Further beading accentuates the field panelling, adjacent to fine boxwood stringing
- Opening to reveal a quartet of sliding folio trays, presenting deep russet hues
 - Ebonised pilasters frame the doors, with turned collars, beaded detail and gilt accents
- Generous lower storage in the form of three, tall sleeves, ideal for records

Search [London Fine for #18.8971](#) , or scan the QR code for more photos and details

DIMENSIONS

Max Width: 60.5cm (23.75")
 Max Depth: 40.5cm (16")
 Max Height: 117cm (46")
 Folio Slide Width: 39cm (15.25")
 Folio Slide Depth: 27cm (10.75")
 Folio Slide Height: 2.5cm (1")
 Lower Compartment Width: 12.5cm (5")
 Lower Compartment Depth: 32cm (12.5")
 Lower Compartment Height: 40.5cm (16")

LIST PRICE

£2,850.00

