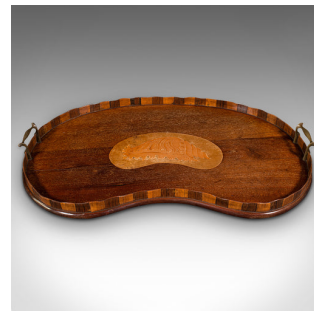


Antique Butler's Serving Tray, English, Afternoon Tea Platter, Regency, C.1820



DESCRIPTION

Our Stock # 18.8973

This is an antique butler's serving tray. An English, mahogany and walnut afternoon tea platter with boxwood inlay, dating to the Regency period, circa 1820.

- Fascinating kidney shaped tray with delightful quality and appearance
- Displays a desirable aged patina and in good order throughout
- Select stocks show fine grain interest and deep caramel hues
- Shaped inlay to centre with superb boxwood shell motif
- Dressed with a pair of shaped brass handles over the wavy edge rim
- Finished with a protective faux crocodile cushion to the base

This is an appealing antique butler's serving tray, with wonderful craftsmanship and a fine appearance. Perfect for afternoon tea or serving favourite tipples in the drawing room. Solid joints and construction, delivered waxed, polished and ready for the home.

Search [London Fine for #18.8973](#), or scan the QR code for more photos and details

DIMENSIONS

Max Width: 60.5cm (23.75")
 Max Depth: 37.5cm (14.75")
 Max Height: 5.5cm (2.25")
 Internal Width: 56.5cm (22.25")
 Internal Depth: 32.5cm (12.75")
 Internal Height: 46cm (18")

LIST PRICE

£895.00

