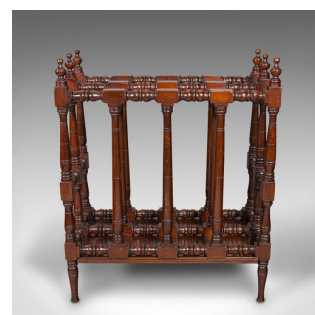


Antique Bobbin Turned Canterbury, English, Newspaper Rack, Edwardian, Circa 1910



DESCRIPTION

Our Stock # 18.8989

This is an antique bobbin-turned Canterbury. An English, mahogany newspaper rack, dating to the Edwardian period, circa 1910.

- Traditionally appealing Canterbury with charming carved details
- Displays a desirable aged patina and in good order
- Select stocks present deep caramel hues and fine grain interest
- Miniature finials and turned sections add decoration to the frame
- Raised upon a quartet of tapering circular feet at each corner

This is a delightful antique bobbin-turned Canterbury rack, with appealing colour and traditional appearance. Solid joints and construction, delivered waxed, polished and ready for the home.

Search [London Fine for #18.8989](#) , or scan the QR code for more photos and details

DIMENSIONS

Max Width: 40cm (15.75")
 Max Depth: 20cm (7.75")
 Max Height: 49cm (19.25")
 Segment Width: 35.5cm (14")
 Segment Depth: 6.5cm (2.5")
 Segment Height: 33cm (13")

