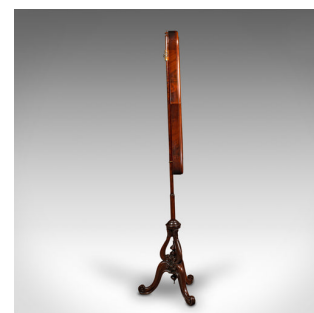
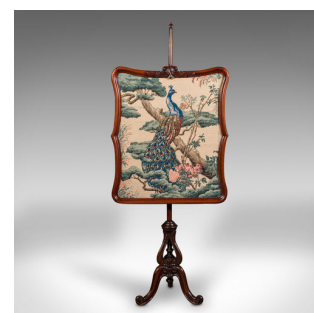
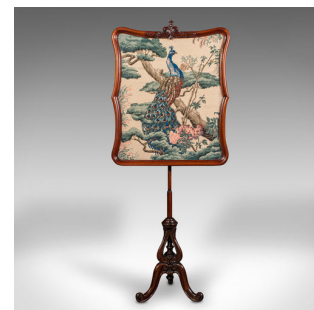


Antique Fireside Pole Screen, English, Walnut, Tapestry, Adjustable, Regency



DESCRIPTION

Our Stock # 18.9058

This is an antique fireside pole screen. An English, walnut and glass embroidered panel on adjustable riser, dating to the Regency period, circa 1820.

- Superb proportion to the skilfully embroidered screen with appealing finish
- Displays a desirable aged patina and in good order throughout
- Quality walnut stocks present fine grain interest and warm caramel hues
- Excellent needlepoint tapestry to panel presented behind clear, bright glass
- Shield shaped panel hosts a generously sized tapestry within a rolled frame
- Adorned with a carved twin scroll pediment of sash form
- Colourful tapestry depicts a large peacock set within a leafy tree
- Excellent feather detail, the whole embroidered with a colourful palette
- Versatile screen raised through an adjustment range of 26cm (10.25")
- Distinctive open bulb to the lower support with an inset turned finial
- A repeat of the double scroll motif adorns the intersection of each support

Search [London Fine for #18.9058](#) , or scan the QR code for more photos and details

DIMENSIONS

Max Width: 61cm (24")
 Max Depth: 34cm (13.5")
 Max Height: 105cm (41.25")
 Panel Width: 61cm (24")
 Panel Depth: 5cm (2")
 Panel Height: 72.5cm (28.5")
 Adjustment Range: 26cm (10.25")

LIST PRICE

£1,895.00

