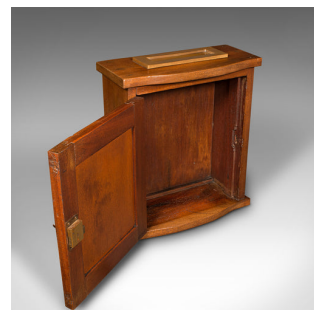


Antique Country House Hotel Letterbox, English, Countertop, Key Box, Edwardian



DESCRIPTION

Our Stock # 18.9011

This is an antique country house hotel letterbox. An English, mahogany and brass countertop key box, dating to the Edwardian period, circa 1910.

- Useful cabinetry, with a generous letterbox - ideal for a small hotel
- Displays a desirable aged patina and in good order
- Select stocks present fine grain interest and mellow caramel hues
- Thick brass letterbox to the top, with firm return action
- Field panel front door with inset, brass-lined lock – in working order, key present

This is a delightful antique country house hotel letterbox, with quality stocks and fittings. Perfect for a key return within a boutique hotel or as a ballot box. Solid joints and construction, delivered waxed, polished and ready to use.

Search [London Fine for #18.9011](#) , or scan the QR code for more photos and details

DIMENSIONS

Max Width: 36.5cm (14.25")
 Max Depth: 16.5cm (6.5")
 Max Height: 41.5cm (16.25")
 Internal Width: 28.5cm (11.25")
 Internal Depth: 10.5cm (4.25")
 Internal Height: 36cm (14.25")

LIST PRICE

£650.00

