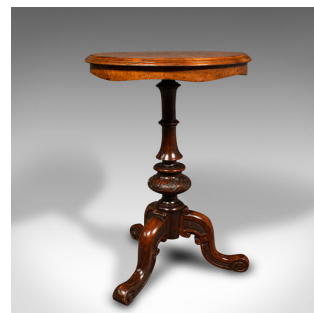
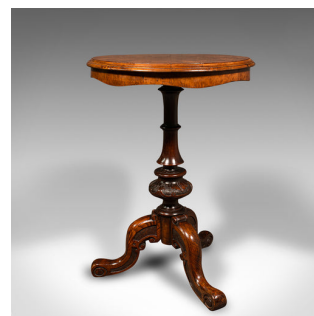


Antique Lamp Table, English Burr Walnut, Decorative, Occasional, Early Victorian



DESCRIPTION

Our Stock # 18.9037

This is an antique lamp table. An English, burr walnut rotary top decorative occasional table, dating to the early Victorian period, circa 1840.

- Accentuate any room with this striking circular table
- Displays a desirable aged patina and in superb order
- Quality burr walnut presents excellent grain interest
- Rich caramel hues beam splendidly beneath a wax polish finish
- Captivating octet book-matching to the highly distinctive rotary top
- Gently rolled edges situated above a delightful wavy sash apron
- Raised upon a stout support column, adorned with turned collars and leaf carved cup
- Attractive trio of cabriole legs terminate in scroll detailed toes

This is an exceptional antique lamp table, graced with beautiful craftsmanship and excellent material choices. Sure to enhance any room in the house. Solid joints and construction, delivered waxed, polished and ready for the home.

Search [London Fine for #18.9037](#), or scan the QR code for more photos and details

DIMENSIONS

Max Width: 51.5cm (20.25")

Max Depth: 51.5cm (20.25")

Max Height: 71.5cm (28.25")

LIST PRICE

£1,495.00

