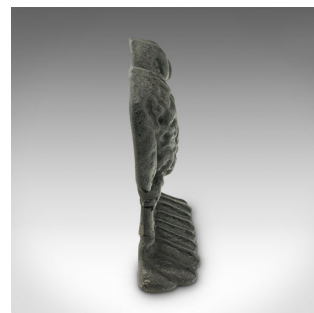


Antique Sheep Doorstop, English, Cast Iron, Decorative Farmhouse Keep, Victorian



DESCRIPTION

Our Stock # 18.9043

This is an antique sheep doorstop. An English cast iron decorative farmhouse door keeper, dating to the late Victorian period, circa 1900.

- Farmhouse appeal to this charming figurative door stopper.
- Displays a desirable aged patina and in good order throughout
- Cast with excellent detail, from the curly horns to tousled wool coat
- Good consistent graphite finish to the tactile cast iron
- Offers a pleasing weight in the hand of 2.4kg (5.29 lb)

This is a charming antique sheep doorstop, with fascinating detail to the body and base. Delivered polished and ready to use.

Search [London Fine for #18.9043](#), or scan the QR code for more photos and details

DIMENSIONS

Max Width: 22.5cm (8.75")

Max Depth: 4.5cm (1.75")

Max Height: 16.5cm (6.5")

