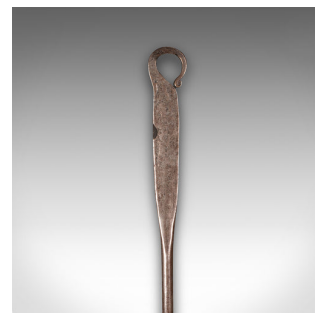
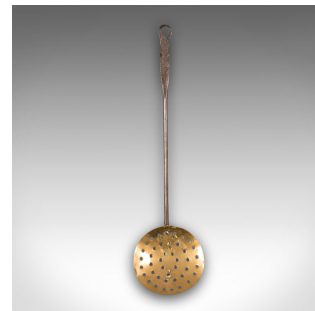


Antique Chestnut Warmer, English, Brass, Fireplace Roaster, Ladle, Georgian



DESCRIPTION

Our Stock # 18.9048

This is an antique chestnut warmer. An English, brass and cast iron fireplace roaster or ladle, dating to the Georgian period, circa 1800.

- Fascinating fireside tool or decorative roaster from the Georgian period
- Displays a desirable aged patina and in good order
- Perforated brass roasting platform presents subtle golden tones
- Slender cast iron handle with flattened 'otter tail' form incorporating the hanging loop
- Ideal decor for a country house fireplace or kitchen

This is a distinctive antique chestnut warmer, with wonderful finish and colour. A treat for the fireside. Delivered polished and ready to enjoy.

Search [London Fine for #18.9048](#) , or scan the QR code for more photos and details

DIMENSIONS

Max Width: 15cm (6")

Max Depth: 5cm (2")

Max Height: 58cm (22.75")

