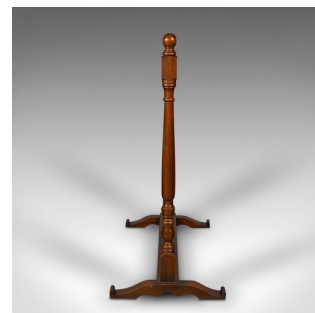


Tall Antique Robe Rail, English Rug Stand, Towel Dryer, Country House, Edwardian



DESCRIPTION

Our Stock # 18.9020

This is a tall antique floor standing robe rail. An English, mahogany and brass rug stand or towel dryer, dating to the Edwardian period, circa 1910.

- Superb country house proportion with generous size for larger textiles
- Displaying a desirable aged patina and in good order throughout
- Select stocks present fine grain interest and deep russet hues
- Skilfully carved ball finials stand atop block shoulders
- Single, stout brass rail spanning above tapered baluster supports
- Raised upon a wide pair of shaped trestle feet united by a deep stretcher rail

This is a generously sized antique floor standing robe rail with bold forms and useful throughout the house or institution. Solid joints and construction, delivered waxed, polished and ready for service.

Search [London Fine for #18.9020](#) , or scan the QR code for more photos and details

DIMENSIONS

Max Width: 106.5cm (42")

Max Depth: 50.5cm (20")

Max Height: 114cm (45")

