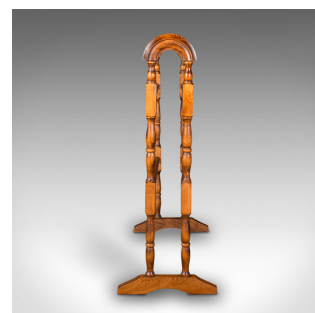


## Vintage Towel Rail Stand, French, Beech, Clothes Horse, Dryer, Rack, Mid Century



### DESCRIPTION

Our Stock # 18.9051

This is a vintage towel rail stand. A French, beech clothes horse or dryer, dating to the mid 20th century, circa 1950.

- Elegant French country taste with soft forms and rich colour
- Displays a desirable aged patina and in good order
- Beech stocks show fine grain interest and warm caramel hues
- Topped with a pair of gently arching united with a trio of rails
- Further pair of rails run between the lower block carvings
- Raised upon a bold pair of shaped trestle feet

This is an appealing vintage towel rail stand with distinctive French country form and craftsmanship. Solid joints and construction, delivered waxed, polished and ready for the home.

Search [London Fine for #18.9051](#) , or scan the QR code for more photos and details

### DIMENSIONS

Max Width: 62.5cm (24.5")

Max Depth: 29.5cm (11.5")

Max Height: 77cm (30.25")

### LIST PRICE

£495.00

