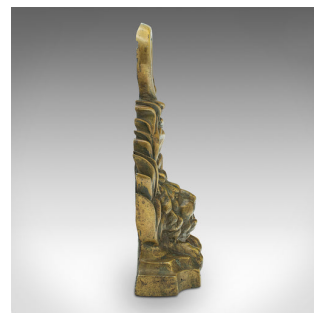
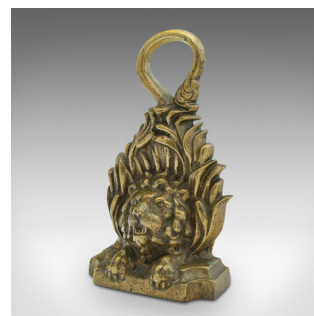
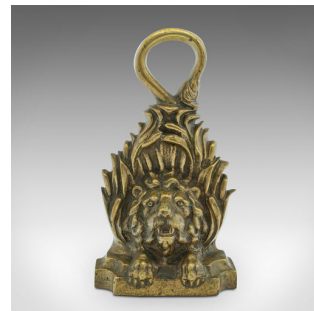


## Heavy Antique Lion Doorstop, English, Brass, Decorative, Door Keep, Victorian



### DESCRIPTION

Our Stock # 18.9064

This is a heavy antique lion doorstop. An English, brass and lead decorative door keeper, dating to the early Victorian period, circa 1850.

- Delightfully substantial stopper graced with an abundance of character
- Displays a desirable aged patina and in good original order
- Quality brass presents gently weathered golden tones
- Jovial character to the lion mask, the tail looped to form a handle
- Lead-filled rear adds mass suitable for holding stout doors
- Stout feeling in hand, with a weight of 6.24kg (13.76 lb)

This is a charming antique lion doorstop, with pleasing brass tones and superb weight. Well suited to service in country houses with heavy doors. Delivered polished and ready to use.

Search [London Fine for #18.9064](#) , or scan the QR code for more photos and details

### DIMENSIONS

Max Width: 16cm (6.25")

Max Depth: 7cm (2.75")

Max Height: 28.5cm (11.25")

