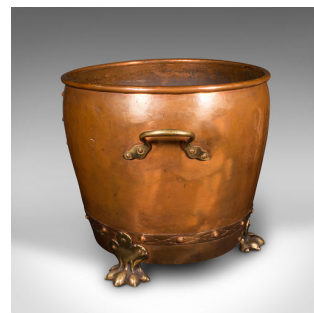
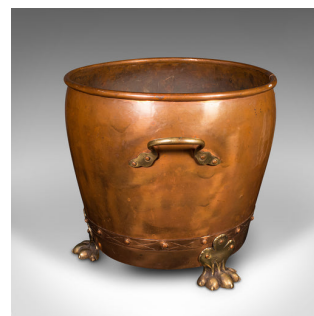


## Antique Fireside Bin, English Copper, Brass, Coal, Log Bucket, Victorian, C.1880



## DESCRIPTION

Our Stock # 18.9045

This is an antique fireside bin. An English, copper and brass coal or log bucket with lid, dating to the late Victorian period, circa 1880.

- Attractive Victorian fireplace bin with appealing finish
- Displays a desirable aged patina in good original order
- Lightly polished copper presents appealing amber tones
- Brass fittings throughout add a contrasting golden touch
- Presents a pleasingly clean, lightly weathered interior
- Fascinating binding accentuated with chased diamond pattern and lobe finish
- Dressed with a pair of rolled handles with shaped mounts
- Standing upon a trio of distinctive wide paw feet

This is a delightful antique fireside bin, suitable for all fuel types. Set to enhance any fireplace with its desirable appearance. Delivered polished and ready to use.

Search [London Fine for #18.9045](#) , or scan the QR code for more photos and details

## DIMENSIONS

Max Width: 42cm (16.5")  
Max Depth: 34cm (13.5")  
Max Height: 31.5cm (12.5")  
Opening Diameter: 32.5cm (12.75")  
Internal Height: 29cm (11.5")

