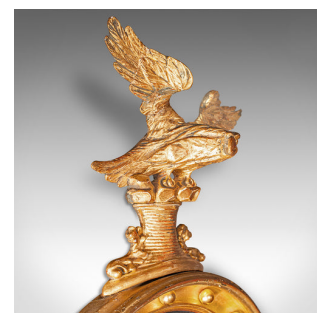
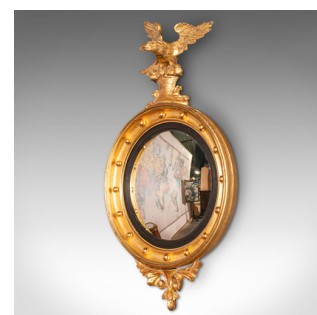
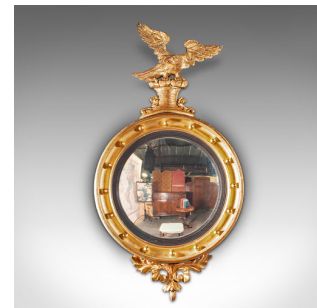


Antique Decorative Convex Mirror, English, Giltwood, Eagle Surmount, Victorian



DESCRIPTION

Our Stock # 18.9025

This is an antique decorative convex mirror. An English, giltwood and gesso circular mirror with eagle surmount, dating to the late Victorian period, circa 1880.

- Accentuate your room with this striking mirror
- Displays a desirable aged patina throughout
- Warm golden hues beam from the giltwood and gesso frame
- Convex mirror plate displays a clear, bright reflection with minimal foxing
- Perched atop in prominence, the superb eagle spreads its wings
- Plate set tastefully within a reeded ebonised slip
- Beaded detail adorns the circumference of the quality mirror plate
- Dressed to the rear with a mounting wire for ease of hanging

This is a distinctive antique convex mirror with a fascinating eagle surmount and high decorative appeal. Superb colour and a wonderful mirror reflection. Delivered polished and ready to mount.

Search [London Fine for #18.9025](#) , or scan the QR code for more photos and details

DIMENSIONS

- Max Width: 53.5cm (21")
- Max Depth: 13.5cm (5.25")
- Max Height: 102.5cm (40.25")
- Mirror Plate Diameter: 36cm (14.25")

