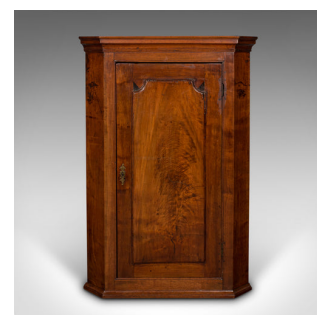


Antique Corner Cabinet, English, Wall Cupboard, Floor Standing, Georgian, C.1780



**DESCRIPTION**

Our Stock # 18.9033

This is an antique corner cabinet. An English, mahogany and fruitwood wall cupboard, dating to the Georgian period, circa 1780.

- Appealing Georgian corner cupboard with fine figuring and colour
- Displays a desirable aged patina and in good order throughout
- Flame stocks show fine grain interest and rich caramel hues
- Ebonised quartered inlays provide an attractive contrast to fascia
- Finished with a gently tiered crown above the cabinet frame
- Large field panel door dressed with a shaped brass lock escutcheon – in working order, key present
- A trio of serpentine shelves situated within the generously sized interior
- Dressed to the rear with a pair of small brass mounting loops

This is a distinctive antique corner cabinet, presenting a wonderful example of Georgian craftsmanship. Suitable for wall mounting or floor standing within the corner of a room. Solid joints and construction, delivered waxed, polished and ready for the home.

Search [London Fine for #18.9033](#), or scan the QR code for more photos and details

**DIMENSIONS**

- Max Width: 78cm (30.75")
- Max Depth: 46cm (18")
- Max Height: 113.5cm (44.75")
- Depth at 90 Degree Angle to Wall: 48.5cm (19")
- Shelf Depth: 39.5cm (15.5")
- Upper Shelf Height: 16cm (6.25")
- Middle Shelves Height: 25.5cm (10")
- Lowest Shelf Height: 29cm (11.5")

**LIST PRICE**

£1,295.00

