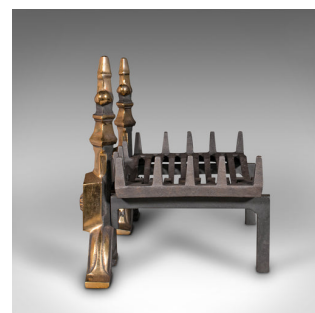
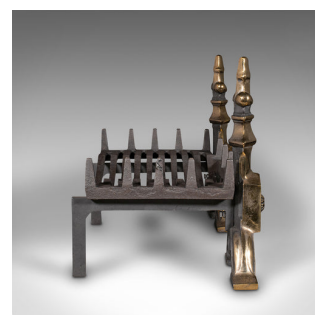
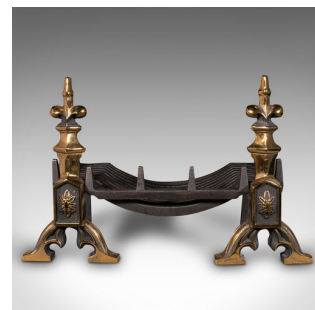


Antique Art Nouveau Fireplace Set, English, Fire Basket, Andirons, Victorian



DESCRIPTION

Our Stock # 18.8084

This is an antique Art Nouveau fireplace set. An English, cast iron fire basket with brass andirons, dating to the Victorian period, circa 1900.

- Substantial proportion and fine tonality for the hearth
- Displays a desirable aged patina and in good order
- Wide cast iron fire basket with a good, consistent graphite finish throughout
- Attractive brass fire dogs with Art Nouveau taste bask in bright golden tones
- The traditional fire basket adorned with a distinctive barbed tooth edge
- Andirons topped with a Fleur de Lys motif with foliate medallion to centre
- Raised upon broad bracket feet with trefoil shaped centres
- Generously sized basket resting upon the outstretched support arm with a square rear foot

This is an attractive antique fireplace with a distinctive fire basket, and a graceful pair of fire dogs in the Art Nouveau taste. Suitable for all fuel types. Delivered polished and ready for the fire side.

Search [London Fine for #18.8084](#) , or scan the QR code for more photos and details

DIMENSIONS

Max Width: 75.5cm (29.75")
 Max Depth: 42cm (16.5")
 Max Height: 48.5cm (19")
 Andiron Width: 25.5cm (10")
 Andiron Depth: 42cm (16.5")
 Andiron Height: 48.5cm (19")
 Basket Interior Width: 56.5cm (22.25")
 Basket Interior Depth: 33cm (13")
 Basket Interior Height: 11cm (4.25")

LIST PRICE

£1,195.00

