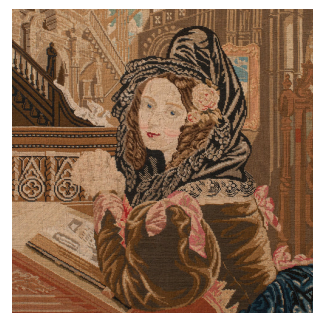


Antique Tapestry Fire Screen, English, Walnut, Needlepoint, Fireside, Victorian



DESCRIPTION

Our Stock # 18.9117

This is an antique tapestry fire screen. An English, walnut and needlepoint fireside panel, dating to the early Victorian period, circa 1840.

- Exceptional frame quality with a striking embroidered portrait
- Displays a desirable aged patina and in good order
- Select walnut stocks present fine grain interest and rich caramel hues
- Panel presented behind clear, bright glass set neatly within the frame
- Adorned with a pierced scrolled form pediment between a pair of short finials
- Skilfully embroidered, the tapestry presents a woman in fine dress
- Excellent background detail to the portrait creates a fascinating scene
- Lower frame hosts a second carved bracket with further scroll motif
- Hessian backed panel adds an appealing finish to the reverse
- Turned balusters with cupped petal carvings terminate in squat cabriole legs
- Leaf carved knees sit either side a tapered stretcher rail with reeded detail

Search [London Fine for #18.9117](#), or scan the QR code for more photos and details

DIMENSIONS

Max Width: 69.5cm (27.25")
 Max Depth: 48.5cm (19")
 Max Height: 115.5cm (45.5")
 Panel Width: 49.5cm (19.5")
 Panel Height: 57.5cm (22.75")

