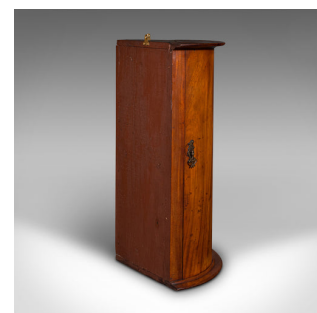
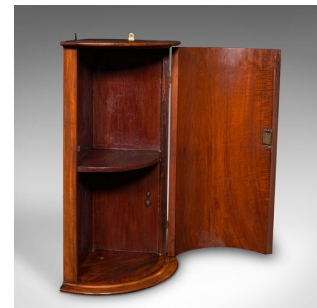


Small Antique Corner Medicine Cabinet, English, Bow Front, Cupboard, Victorian



DESCRIPTION

Our Stock # 18.9121

This is a small antique corner medicine cabinet. An English, flame mahogany bow front hanging cupboard, dating to the late Victorian period, circa 1900.

- Pleasingly diminutive with traditional bow front form
- Displays a desirable aged patina and in good order
- Select flame stocks present exceptional grain interest throughout
- Rich caramel hues beam beneath the wax polish finish
- Usefully flat top ideal for display or hosting a candle lamp
- Gracefully arched door dressed opening upon a pair of brass butterfly hinges
- Door dressed with shaped brass lock escutcheon – working lock, key present
- The key is a wonderfully ornate example with lyre form fob
- Left-hand door held securely with internal clasp
- Interior arranged as a pair of useful shelves
- The cabinet stands upon a demi-lune plinth base

Search [London Fine for #18.9121](#) , or scan the QR code for more photos and details

DIMENSIONS

- Max Width: 37.5cm (14.75")
- Max Depth: 28.5cm (11.25")
- Max Height: 62cm (24.5")
- Shelf Depth: 20cm (7.75")
- Upper Shelf Height: 28cm (11")
- Lower Shelf Height: 27cm (10.75")

