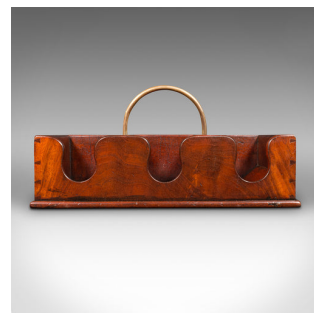
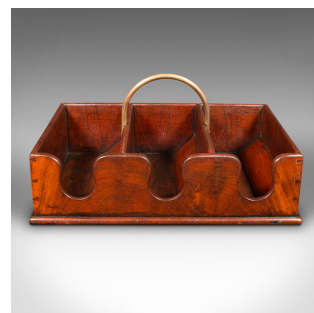
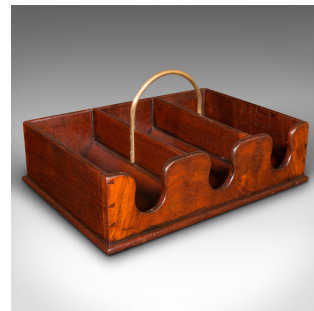


Antique Country House Sommelier's Case, English, Wine Bottle Caddy, Victorian



DESCRIPTION

Our Stock # 18.9154

This is an antique country house sommelier's case. An English, mahogany and brass wine bottle caddy, dating to the Victorian period, circa 1880.

- Serve up a trio of bottles with this delightful carry case
- Displays a desirable aged patina and in good order
- Quality stocks show fine grain interest and warm caramel hues
- Rolled brass handle adds an appealing golden tonality
- Three shaped sections with angled interior rest for standard wine bottles
- Quality dovetail joints to the corners add distinction
- Dressed to the base with a protective faux crocodile leather pad

This is an attractive antique country house sommelier's case, with quality craftsmanship ideal for impressing guests. Solid joints and construction, delivered waxed, polished and ready for the home.

Search [London Fine for #18.9154](#) , or scan the QR code for more photos and details

DIMENSIONS

Max Width: 35.5cm (14")
Max Depth: 25.5cm (10")
Max Height: 17.5cm (7")
Section Width: 10cm (4")
Section Depth: 22cm (8.75")
Section Height: 9cm (3.5")

