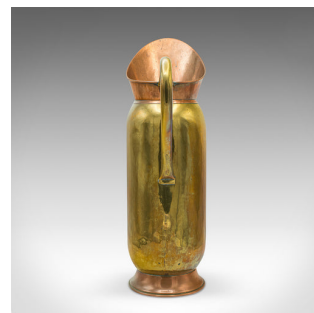
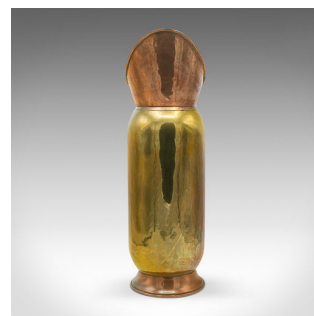
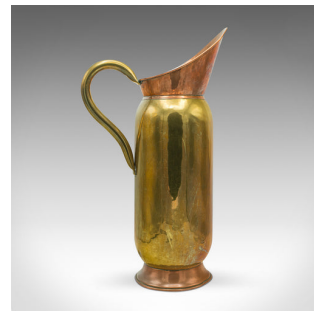


Tall Antique Pouring Jug, English, Brass, Copper, Ewer, Stem Vase, Victorian



DESCRIPTION

Our Stock # 18.9138

This is a tall antique pouring jug. An English, brass and copper ewer or long stem vase, dating to the late Victorian period, circa 1900.

- Distinctive use of dual materials creates an attractive appearance
- Displaying a desirable aged patina and in good original order
- Polished brass presents a bright golden finish
- Delightful warm copper tones to the broad rim and foot
- Serpentine carry handle of large proportion, with tactile rolled finish
- Engraved maker's mark to base reads J.C. - Brass and pattern number 501-1

This is a superb antique pouring jug the proportion lending itself to use as a decorative long stem vase. Fine finish and colour. Delivered polished and ready to display.

Search [London Fine for #18.9138](#) , or scan the QR code for more photos and details

DIMENSIONS

Max Width: 16cm (6.25")

Max Depth: 29cm (11.5")

Max Height: 51cm (20")

Opening Diameter: 11.5cm (4.5")

LIST PRICE

£695.00

