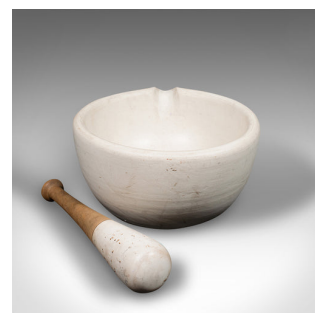


Large Antique Mortar and Pestle, English Ceramic, Apothecary, Cookery, Victorian



DESCRIPTION

Our Stock # 18.9132

This is a large antique mortar and pestle. An English, ceramic and beech apothecary or cookery aid, dating to the late Victorian period, circa 1900.

- Presents a delightfully clean appearance and pleasingly substantial
- Displays a desirable aged patina with light signs of use
- Naturally finished ceramic a tactile delight, with crisp white hues
- Quality turned beech handle to pestle shows fine grain interest
- Engraved to base 'Warranted Acid Proof'
- Of Impressive weight at 5.65kg (12.4 lb)

This is an attractive antique mortar and pestle with a delightfully clean appearance. As useful today as it was over 100 years ago, it will also make a fine display item upon the work top. Delivered polished and ready to enjoy.

Search [London Fine for #18.9132](#) , or scan the QR code for more photos and details

DIMENSIONS

Mortar Width: 27.5cm (10.75")

Mortar Depth: 26cm (10.25")

Mortar Height: 13cm (5")

Pestle Diameter: 6cm (2.25")

Pestle Height: 27cm (10.75")

