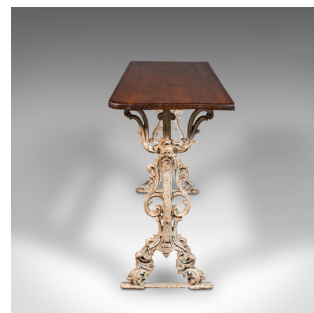
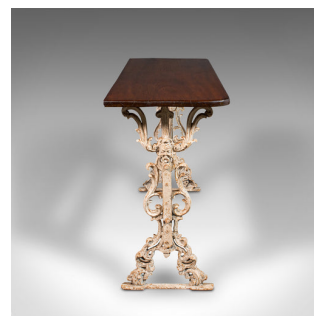


Antique Orangery Console Table, English, Walnut, Reception Hall, Side, Victorian



DESCRIPTION

Our Stock # 18.9098

This is an antique orangerie console table. An English, walnut and cast iron reception or side table, dating to the early Victorian period, circa 1850.

- Grace your orangerie or portico with this distinctive console table
- Displays a desirable aged patina and in good order
- Striking walnut top shows fine grain interest and deep caramel hues
- Leading edge of top hosts gently curved corners, straight edge to rear
- Standing upon a decorative cast iron frame in the manner of Coalbrookdale
- Finished in white with a pleasingly weathered appearance
- Relief figural masks adorn the upper supports, flanked by flared leaf mounts
- Shaped trestle feet accentuated with highly ornate forms

This is a dashing antique orangerie console table, with pleasing walnut and cast iron craftsmanship. Ornate appearance set to enhance any orangerie, conservatory or reception hall. Solid joints and construction, delivered waxed, polished and ready for the home.

Search [London Fine for #18.9098](#), or scan the QR code for more photos and details

DIMENSIONS

Max Width: 122.5cm (48.25")

Max Depth: 43cm (17")

Max Height: 74.5cm (29.25")

LIST PRICE

£2,450.00

