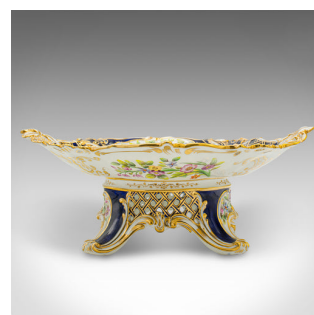


Antique Decorative Comport, English, Ceramic Serving Dish, Edwardian, Circa 1910



DESCRIPTION

Our Stock # 18.9175

This is an antique decorative comport. An English, gilded ceramic serving dish, dating to the Edwardian period, circa 1910.

- Attractive example of serving ware, with ornate detail and fine colour
- Displays a desirable aged patina and in good original order
- White ceramic presents a bright appearance throughout
- Striking golden tones set upon sections of deep royal blue
- Decorated with bouquets of spring flowers in an appealing palette of colours

This is an appealing antique decorative comport, with superb colour and pattern detail. A treat for the dinner service. Delivered polished and ready to display.

Search [London Fine for #18.9175](#), or scan the QR code for more photos and details

DIMENSIONS

Max Width: 33cm (13")

Max Depth: 24cm (9.5")

Max Height: 12cm (4.75")

LIST PRICE

£495.00

