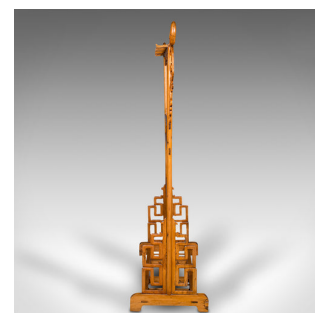
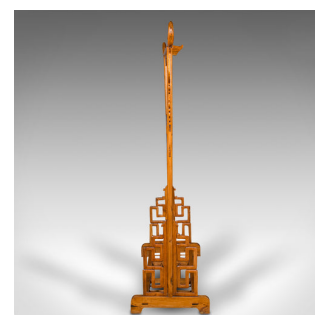


Tall Antique Carved Hall Stand, Oriental, Chinese Elm, Hat, Coat Rack, Victorian



DESCRIPTION

Our Stock # 18.9192
This is a tall antique carved hall stand. An Oriental, Chinese elm hat and coat rack, dating to the late Victorian period, circa 1900.

- Delightful Chinese provincial taste with strong decorative appeal
- Displays a desirable aged patina and in good order
- Select Chinese elm with gently rolled finish shows fine grain interest and warm caramel hues
- Usefully free-standing, can be situated in any setting
- Bold scrolled forms create a prominent surmount with decorative brackets
- Seven pegs to the top rail ideal for hosting hats, coats or scarves
- Wide base with turned slats an ideal mount for boots and shoes
- Raised upon shaped trestle feet with striking Greek key brackets

This is a fascinating antique carved hall stand, with generous storage for the family reception room. Delivered waxed, polished and ready for the home.

Search [London Fine for #18.9192](#) , or scan the QR code for more photos and details

DIMENSIONS

Max Width: 137cm (54")
Max Depth: 48cm (19")
Max Height: 173.5cm (68.25")

LIST PRICE

£1,850.00

