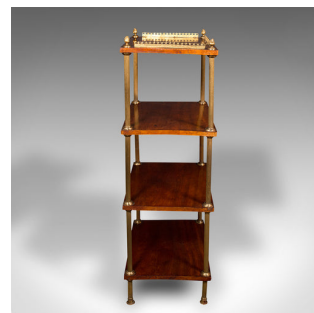
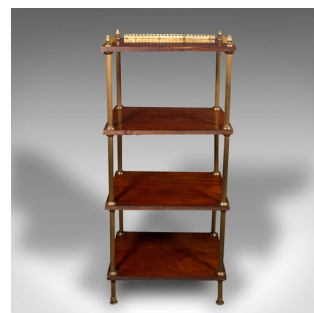
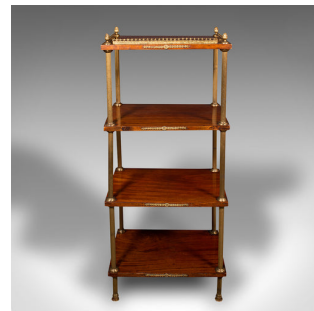


Antique Etagere, French, 4 Tier Whatnot, Empire Style, Stand, Victorian, C.1900



DESCRIPTION

Our Stock # 18.9210

This is an antique etagere. A French, mahogany and brass 4 tier whatnot in Empire style, dating to the late Victorian period, circa 1900.

- Graced with wonderful colour and decorative touches
- Displays a desirable aged patina and in good original order
- Select stocks show fine grain interest and rich caramel hues
- Quality brasswork shows appealing golden tones
- Brass gallery rails dress the top tier, with small finials to each corner
- Ormolu mounts adorn the shelf edges with foliate roundels over leaf detail
- Each tier separated by distinctive reeded cylindrical supports
- The whole standing upon a quartet of circular feet

This is a striking antique etagere, with exceptional colour and the strong taste of Empire Style furniture. Solid joints and construction, delivered waxed, polished and ready for the home.

Search [London Fine for #18.9210](#), or scan the QR code for more photos and details

DIMENSIONS

Max Width: 47.5cm (18.75")

Max Depth: 35cm (13.75")

Max Height: 107cm (42.25")

Shelf Spacing Height: 28.5cm (11.25")

