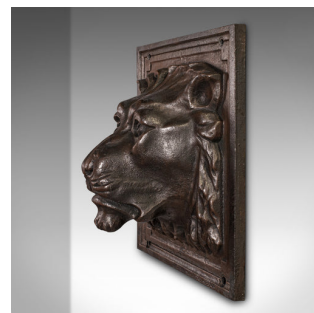
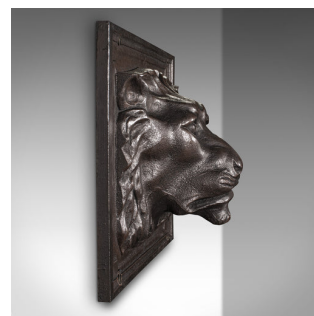


Heavy Antique Country House Lion Wall Plaque, English, Decor, Relief, Victorian



DESCRIPTION

Our Stock # 18.9087

This is a heavy antique country house lion wall plaque. An English, cast iron gatehouse decorative relief portrait, dating to the late Victorian period, circa 1900.

- Superb relief form, with great character and reassuring weight
- Displays a desirable aged patina throughout
- Stout cast iron with prominent lion head relief portrait, with a weight of 21.2kg (46.7 lb)

lb)

- Presents dark grey-brown hues and striking tonality
- Ideal for mounting to a gatehouse or entrance, replete with deep mounting holes

This is an imposing antique country house lion wall plaque, with a delightful relief form and pleasingly substantial. Delivered polished and ready to display.

Search [London Fine for #18.9087](#) , or scan the QR code for more photos and details

DIMENSIONS

Max Width: 36cm (14.25")

Max Depth: 17cm (6.75")

Max Height: 36cm (14.25")

