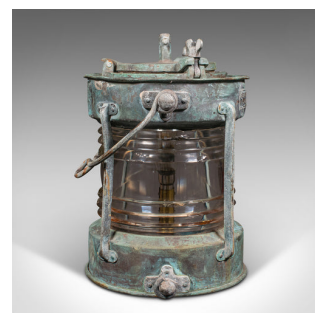


Antique Ship's Anchor Lamp, English, Bronze, Glass, Maritime Light, Edwardian



DESCRIPTION

Our Stock # 18.9217

This is an antique ship's anchor lamp. An English, heavy bronze and glass maritime light, dating to the Edwardian period, circa 1910.

- Striking nauticalia, with a superb weathered appearance
- Displays a desirable aged patina and in good order
- Naturally weathered bronze case of superb weight
- Shows verdigris and deep amber hues, for an attractive palette
- Excellent industrial chic to the stout twist-lock clamps that secure the top plate
- Bold Fresnel lens lamp with distinctive ridged glass, with some aged losses present
- Maker's marks for Meteorite and Harvie of Birmingham add further interest
- Accepts a standard bayonet bulb, accessible through the top plate
- Finished with a quality length of cable, with British Standards compliant 3-pin plug

This is a fascinating and pleasingly decorative antique ship's anchor lamp, with exquisite natural weathering and warm illumination. Delivered ready to enjoy.

Search [London Fine for #18.9217](#) , or scan the QR code for more photos and details

DIMENSIONS

Max Width: 29.5cm (11.5")
Max Depth: 27cm (10.75")
Max Height: 45cm (17.75")

LIST PRICE

£1,295.00

