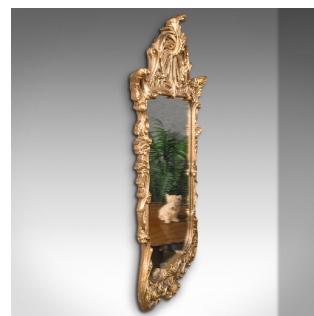


Tall Vintage Wall Mirror, English, Gilt, Decorative, Renaissance Revival, C.1960



DESCRIPTION

Our Stock # 18.9100

This is a tall vintage wall mirror. An English, gilt framed decorative mirror in Renaissance revival taste, dating to the mid 20th century, circa 1960.

- Strikingly ornate mirror with great colour and reflective quality
- Displays a desirable aged patina and in good order
- Bright golden hues beam from the gilt finished frame
- Original mirror plate with minimal foxing and bright appearance
- Maker's mark to rear for Atsonea Superior Products, Made In England

This is an ornate vintage wall mirror, with tall, narrow profile and a striking frame in traditional taste. A treat for any room. Delivered polished and ready for the home.

Search [London Fine for #18.9100](#), or scan the QR code for more photos and details

DIMENSIONS

Max Width: 48.5cm (19")
Max Depth: 5.5cm (2.25")
Max Height: 86cm (33.75")
Mirror Plate Width: 34cm (13.5")
Mirror Plate Height: 51.5cm (20.25")

LIST PRICE

£895.00

