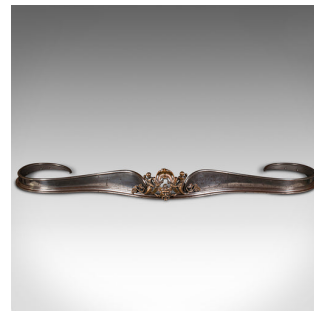


Antique Exhibition Showpiece Fire Kerb, English, Fireplace, Fender, Victorian



DESCRIPTION

Our Stock # 18.9149

This is an antique exhibition showpiece fire kerb. An English, steel and bronze fireplace fender with Nautical taste, dating to the early Victorian period, circa 1850.

- Fascinating moustache shape with appealing nautical mythology centrepiece
- Displays a desirable aged patina and in good order throughout
- Steel fender presents polished tonality to the serpentine wave-shaped form
- Fender showing light ageing with a wonderful weathered appearance
- Bronze cartouche centre with pierced fretwork craftsmanship
- Poseidon and cherubic merman figures offer deep golden hues
- Broad scrolled ends offer and internal width of 100.5cm (39.5") to frame the hearth
- Exquisite taste and form in keeping with the Great Exhibition era of exceptionalism

This is a striking antique exhibition showpiece fire kerb, with distinctive form and proportion. Of superb decorative appeal. Delivered polished and ready for the fireplace.

Search [London Fine for #18.9149](#) , or scan the QR code for more photos and details

DIMENSIONS

Max Width: 153.5cm (60.5")
 Max Depth: 41.5cm (16.25")
 Max Height: 13.5cm (5.25")
 Internal Width: 100.5cm (39.5")
 Internal Depth: 30.5cm (12")

LIST PRICE

£1,495.00

