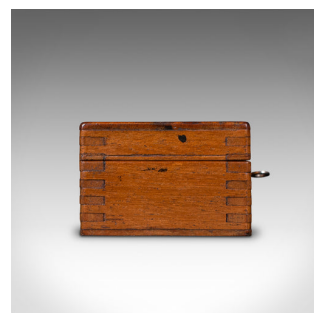


Set of Vintage Draughtsman's Rules, English, Engineer's Instruments, Circa 1930



DESCRIPTION

Our Stock # 18.9257

This is a set of vintage draughtsman's rules. An English, beech engineer's instrument set in a mahogany case, dating to the mid 20th century period, circa 1930.

- Useful set of measuring rules in a delightful carry case
- Displays a desirable aged patina and in good original order
- Quality beech rules with warm biscuit hues and clear ebonised annotations
- Small mahogany carry case presents fine grain interest
- Replete with 11 rules, measuring in fractions of feet
 - Maker's marks for B.J. Hall & Co and J. Halden & Co, of London and Manchester respectively
- Case dressed with an inset working lock – key present
- Lid interior finished with a striking cobalt blue lining

This is a fascinating set of vintage draughtsman's rules, with fine quality and a neat carry case. Ideal for the desktop or travel with a working lock. Delivered waxed, polished and ready to enjoy.

Search [London Fine for #18.9257](#), or scan the QR code for more photos and details

DIMENSIONS

Max Width: 35.5cm (14")
 Max Depth: 6.5cm (2.5")
 Max Height: 4.5cm (1.75")

LIST PRICE

£425.00

