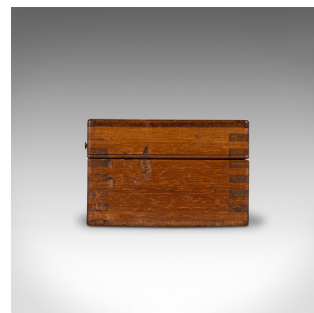
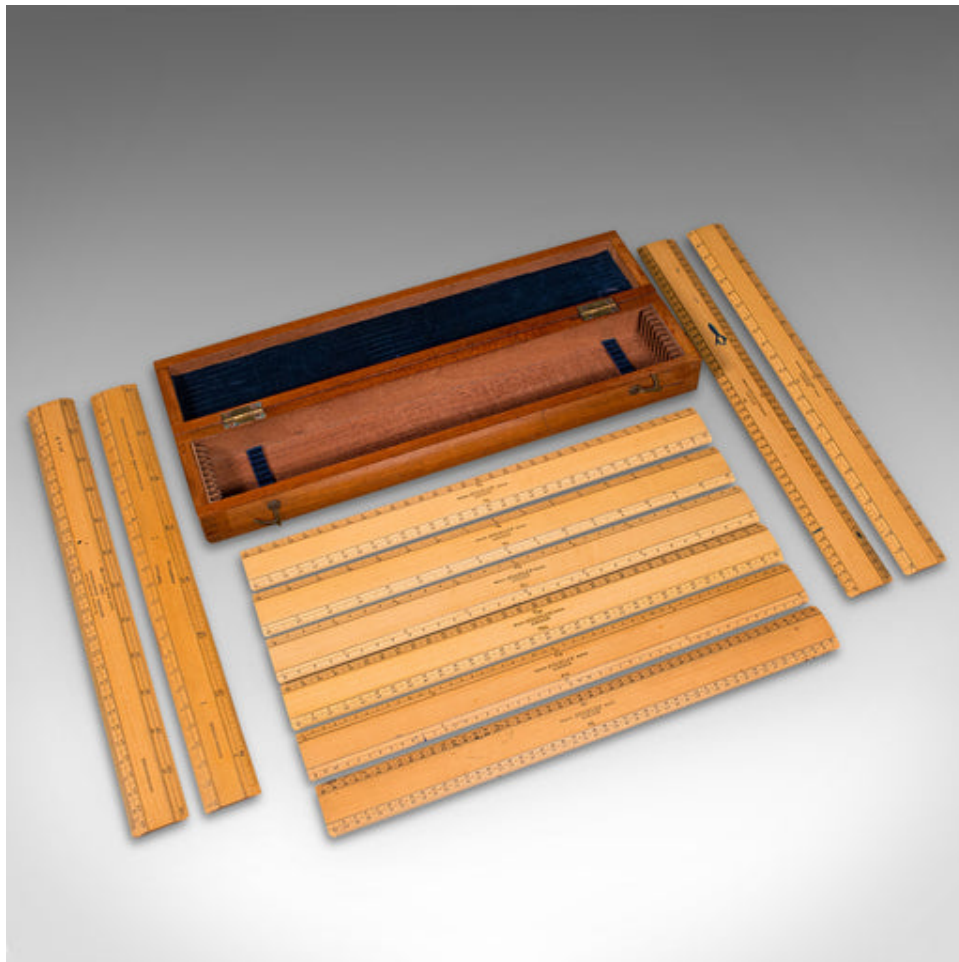


Set Of Antique Draughtsman's Rules, English, Engineer's Instrument Set, C.1920



DESCRIPTION

Our Stock # 18.9258

This is a set of antique draughtsman's rules. An English, beech engineer's instrument set in a mahogany case, dating to the mid 20th century period, circa 1920.

- Charming set of measuring rules in a quality carry case
- Displaying a desirable aged patina and in good original order
- Quality beech rules with warm biscuit hues and clear ebonised annotations
- Small mahogany carry case presents fine grain interest, with rotating brass clasps
- Selection of 10 rules, measuring in fractions of feet
- Eight rules bearing the Stanley London maker's mark
- Further maker's marks for B.J. Hall & Co and Mavita, of London and Birmingham
- Lid interior dressed with a deep blue velvet lining and cushions to the segmented compartment

This is a delightful set of antique draughtsman's rules, with quality Stanley instruments and within a neat carry case. Ideal for the desktop or travel. Delivered waxed, polished and ready to enjoy.

Search [London Fine for #18.9258](#), or scan the QR code for more photos and details

DIMENSIONS

Max Width: 34cm (13.5")

Max Depth: 7cm (2.75")

Max Height: 4.5cm (1.75")

